

# MÉTIS NATION Early Learning & Child Care FRAMEWORK

The Métis Nation has a vision for ELCC in which Métis children and families throughout the Homeland are provided with culturally relevant, self-empowering ELCC programming and services that focus on the development and maintenance of strong Métis families and communities across the lifespan, beginning at birth. Métis Nation ELCC will promote the healthy growth and development of children and families through experiences grounded in Métis culture and community ways while Métis-specific wrap around services, programs and policies will support their ongoing well-being.





## Métis Nation Early Learning & Child Care

# Principles

The Métis Nation proposes that a Métis Nation ELCC system be built on the basis of the following principles:

- ✿ 1. A nation to nation and government to government approach.
- ✿ 2. This Framework aims to build on and support existing or future bilateral and tripartite processes that are in place between Canada and the Métis Nation as a part of ongoing work to address pressing socio-economic issues of the Métis Nation.
- ✿ 3. Métis Nation communities that have decision-making authority over areas that impact them are most likely to be successful at closing socio-economic gaps for children and families.
- ✿ 4. Métis Nation ELCC programs and services will support improved education, health and social outcomes for Métis children, rooted in Métis culture.
- ✿ 5. Métis Nation ELCC programs and services will be delivered by the Métis Nation, through existing well-developed governing bodies that have accountable, effective program delivery infrastructures in each of its regions and can ensure the design and delivery of Métis-specific programs and services for its youngest citizens and their families.







✿ 6. Métis Nation ELCC programs and services will promote the self-governance and self-determination of the Métis Nation.

✿ 7. Métis Nation ELCC programs and services will be guided by considerations of efficiency, effectiveness, responsiveness, relevance, inclusivity, and strengthening of Métis culture, language and community.

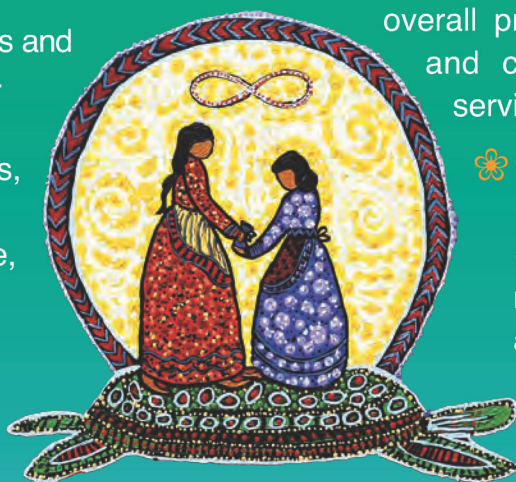
✿ 8. Métis Nation ELCC programs and services will be informed by evidence and knowledge that includes traditional and community-based knowledge, best practice information, and data gathered from research and evaluation.

✿ 9. Métis Nation ELCC program and service implementation will be collaborative in nature,

characterized by a shared commitment to partnering, developing and leveraging existing and new networks, and fostering linkages to improve overall program coordination, connection and continuity in programming and services.

✿ 10. Partnerships and collaborations will be undertaken in a climate of mutual respect, relationship building, renewal and cooperation.

✿ 11. The Métis Nation expects a shared accountability with other levels of governments and ELCC service providers to maximize opportunities for Métis citizens, communities and the Nation.







## Métis Nation Early Learning & Child Care

# Goals

The overarching goal of a Métis Nation ELCC system is to create and enhance early learning supports for Métis children and their families by ensuring ELCC programming is anchored in Métis culture and the unique needs of Métis children and families.

Realizing this goal involves a focus on:

- ✿ 1. Creating Métis-specific programming and services to support the early learning and developmental needs of Métis children and families, developed and delivered by the Métis Nation, through its Governing Members.
- ✿ 2. Supporting improved access to existing programs for Métis Nation children and families.
- ✿ 3. Creating program flexibility that is appropriately tailored to regional characteristics and distinct needs of local families and communities.
- ✿ 4. Supporting Métis Nation-building, and promoting self-governance and self-determination, with ELCC as a critical step to this end.
- ✿ 5. Integrating Métis culture, languages and values into the design and delivery of ELCC programs for Métis Nation children and families.







✿ 6. Promoting, whenever possible, the employment of Métis Nation individuals as early childhood providers.

✿ 7. Supporting ELCC providers, from inside or outside the Métis Nation, to be trained and educated in early childhood education and the cultural ways of the Métis Nation, thereby enhancing their competency in working with Métis Nation children and their families.



✿ 8. Supporting improved education, health and social outcomes for young Métis Nation children with a focus on health promotion, nutrition, education, Métis culture, parental involvement and social support.

✿ 9. Offering transparency and accountability to Métis Nation citizens, communities, government partners and other stakeholders.







**Métis Nation**

# Priorities & Strategies

The Métis Nation has identified the following priorities and strategies:

- ✿ 1. Operationalize responsive and effective ELCC policies and programming to be designed and delivered by the Métis Nation for Métis children and their families that is focused on long-term (10+ years), sustainable transformation and change.
- ✿ 2. Create new culturally relevant and supportive ELCC spaces for young Métis Nation children and their families supported by predictable, flexible, long-term and sustainable funding approaches.
- ✿ 3. Establish and staff Métis Nation ELCC facilities with specific mandates to deliver Métis culture-based ELCC programming for Métis Nation children and families.
- ✿ 4. Identify and draw upon evidence-based, research-informed best practices that are grounded in Métis Nation traditional knowledge so that ELCC experiences and opportunities are responsive to Métis children and their families.
- ✿ 5. Develop and implement Métis-specific curricula and training programs that provide accredited educational opportunities to develop the knowledge and competencies of teachers, early learning specialists, and child care providers working with Métis Nation children and their families, developed with and delivered through Métis Nation institutions.







✿ 6. Create Métis Nation specific culture-based resources and materials to support the training of early childhood educators in post-secondary programs and the recipients of ELCC programs and service.

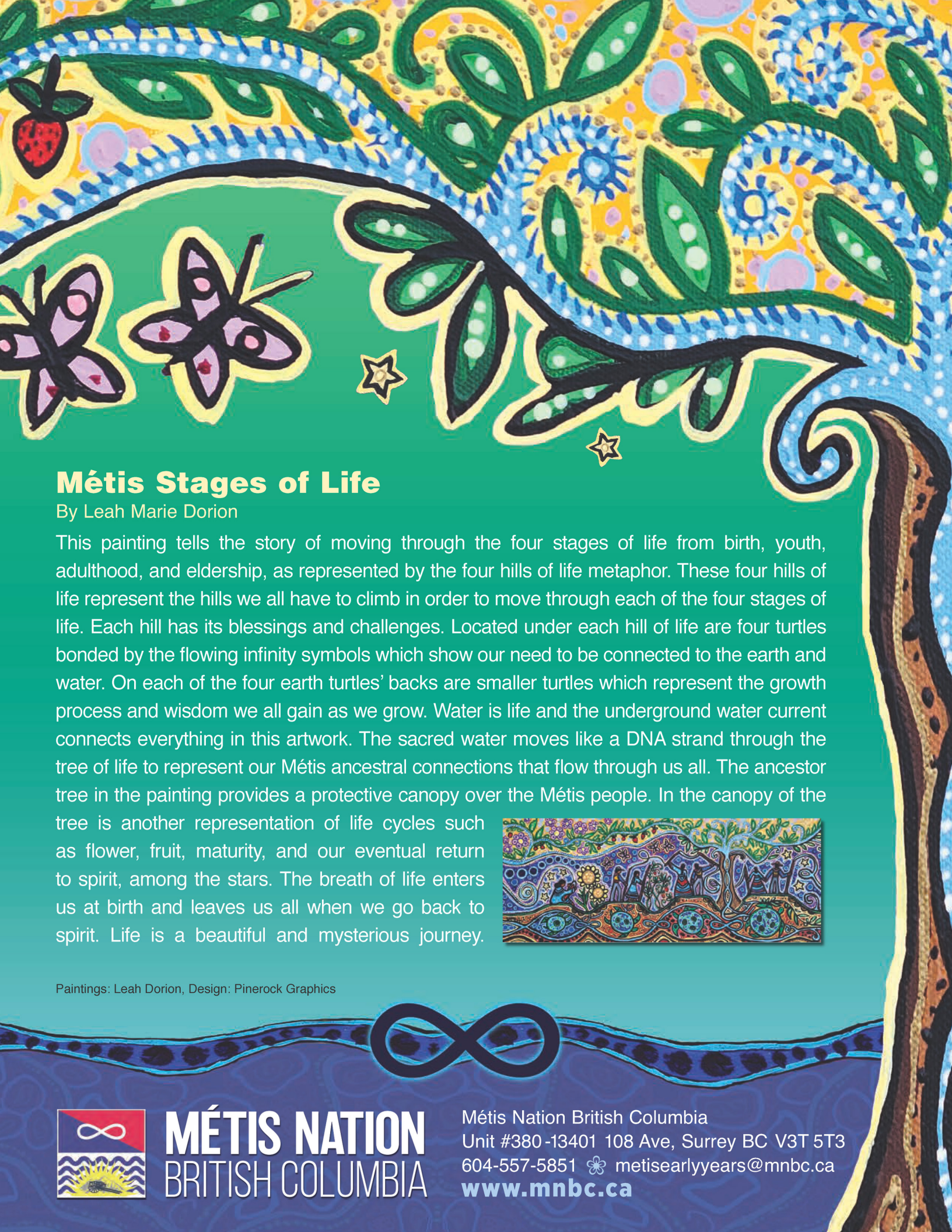
✿ 7. Establish learning and information sharing mechanisms focusing on Métis Nation knowledge, best practices and relevant research.

✿ 8. Work collaboratively to develop a performance measurement approach to track and monitor program activities impacts over the short, medium and longer terms.

✿ 9. Provide programs and services that prevent Métis children being taken into care and that support Métis children in care as part of more comprehensive Métis Nation wrap-around supports.



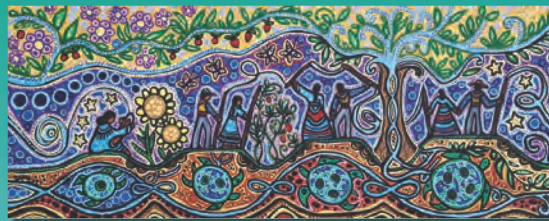




## Métis Stages of Life

By Leah Marie Dorion

This painting tells the story of moving through the four stages of life from birth, youth, adulthood, and eldership, as represented by the four hills of life metaphor. These four hills of life represent the hills we all have to climb in order to move through each of the four stages of life. Each hill has its blessings and challenges. Located under each hill of life are four turtles bonded by the flowing infinity symbols which show our need to be connected to the earth and water. On each of the four earth turtles' backs are smaller turtles which represent the growth process and wisdom we all gain as we grow. Water is life and the underground water current connects everything in this artwork. The sacred water moves like a DNA strand through the tree of life to represent our Métis ancestral connections that flow through us all. The ancestor tree in the painting provides a protective canopy over the Métis people. In the canopy of the tree is another representation of life cycles such as flower, fruit, maturity, and our eventual return to spirit, among the stars. The breath of life enters us at birth and leaves us all when we go back to spirit. Life is a beautiful and mysterious journey.



Paintings: Leah Dorion, Design: Pinerock Graphics



**MÉTIS NATION**  
BRITISH COLUMBIA

Métis Nation British Columbia  
Unit #380 -13401 108 Ave, Surrey BC V3T 5T3  
604-557-5851 ✿ metisearlyyears@mnbc.ca  
[www.mnbc.ca](http://www.mnbc.ca)